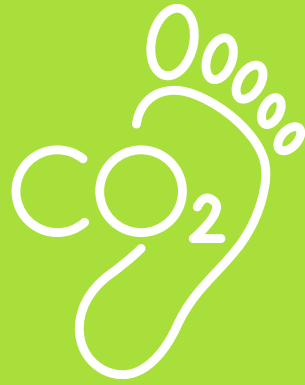


Granby



CARBON FOOTPRINT REPORT 2024



OUR COMMITMENT TO ACHIEVING NET ZERO



**GRANBY IS COMMITTED TO
ACHIEVING**

**NET ZERO
EMISSIONS
BY 2050**

**To fulfil this commitment, we aim to reduce
output emissions by 40% by the end of 2025**

Carbon Footprint



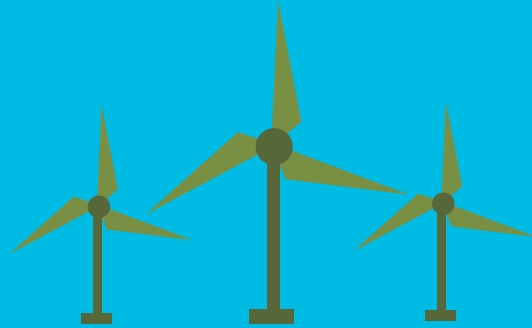
2024 = 90.49 tonnes



2021 = 131.06 tonnes

**31% decrease
in carbon
dioxide
produced**

Just 4 years in
we are well on
target to hit
our 40% goal!



To give context to the carbon produced, Granby's net figure is compiled by including the number of minutes worked throughout the year against the carbon output.

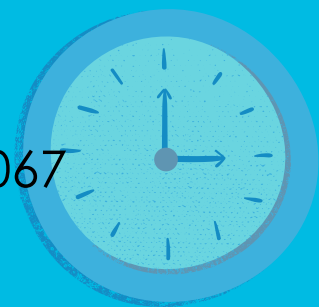
2024 Total minutes worked:
 $90.49 / 4,950,170 = \text{standardised figure } 1.820$

2023 Total minutes worked:
 $97.29 / 8,992,250 = \text{standardised figure } 1.080$

2022 Total minutes worked:
 $97.80 / 7,467,656 = \text{standardised figure } 1.300$

2021 Total minutes worked:
 $131.06 / 6,337,710 = \text{standardised figure } 2.067$

2020 Total minutes worked:
 $106.30 / 3,583,825 = \text{standardised figure } 2.960$



The 2024 carbon output of 90.49kg shows an 7% decrease on 2023, and a 31% decrease on 2021.



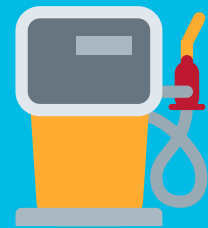
2024 figures

The conversion factors used to create the final kg figure were:

Diesel 2,010,232.00kg

Unit quantity x 2.51279

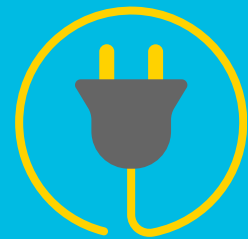
$$800 \times 2.51279 = 2,010.232.00\text{kg}$$



Electricity 43,307.00kg

Unit quantity x 0.20705

$$209,159 \times 0.20705 = 43,307.00\text{kg}$$



Gas 45,175.15kg

Unit quantity x 2.04542

$$22,806 \times 2.04542 = 45,175.15\text{kg}$$



2024 figures

Total weight of carbon produced by Scope 1 and Scope 2 emissions comes to:
90.492kg or 90.49 Tonnes

Scope 1 Direct Emission Sources:

Fuel Combustion (Gas)

Company Vehicles Fuel

Fork Lift Trucks

Scope 2 Indirect Emission Sources:

Purchased Electricity for Business Use

Scope 3 Supply Chain Emission Sources:

Our carrier partners are getting closer to providing meaningful Scope 3 statistics and we hope to be able to supply metrics soon.



2024 figures

Baseline Emissions



Baseline emissions are a record of the greenhouse gases that have been produced in the past and were produced prior to the introduction of any strategies to reduce emissions. Baseline emissions are the reference point against which emissions reduction can be measured.

Emissions	2021	2022	2023	2024
Scope 1	53,141 kg	42,989 kg	42,816 kg	47,185 kg
Scope 2	77,919 kg	54,646 kg	52,480 kg	43,307 kg
Scope 3	n/a*	n/a*	n/a*	n/a*
Total Emissions	131,060 kg	97,635 kg	95,296 kg	90,492 kg

*No Scope 3 reporting due to inability of parcel carriers to accurately produce figures per parcel.

2024 figures

Environmental Management Measures & Projects

The following environmental management measures have been completed or implemented since the 2020 baseline.

The carbon emission reduction achieved by these schemes equate to 0.35 tCO₂e. This represents a 3.4% reduction against the 2020 baseline. These measures will be in effect when performing the contract.

ISO 14001

We are an ISO 14001 certified organisation and have considered our environmental impacts whilst developing operational procedures for over a decade. This means we have robust, environmental operational briefs ensuring we minimise our carbon footprint.

Although shift patterns and hours of work across our whole site have increased sharply since the 2020 baseline, our emissions have largely stood still. We now expect them to show gross reductions as we implement our policies. These changes include reducing face to face meetings with suppliers and clients and replacing diesel trucks with electric charged vehicles.

We plan to introduce further measures:

- Better building insulation through replacement of key roof areas
- Automatic shutter doors on warehouses
- Provide meaningful Scope 3 figures in relation to emissions created through the despatch of individual consignments to locations across the country